



# PAGE LOAD SPEED

SEO



Image  
optimisation

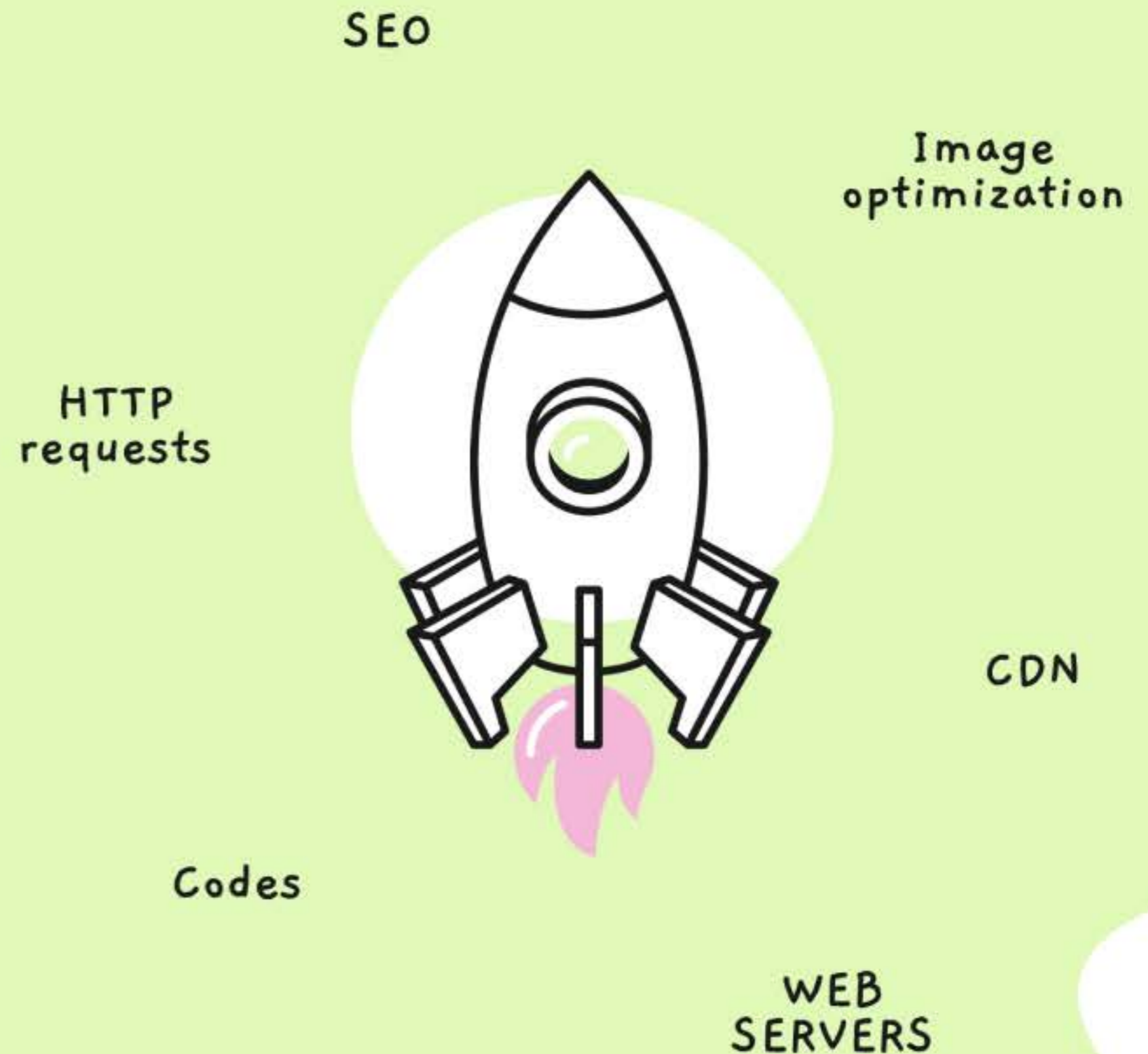
*Presented by Jagatheesan &  
Rohith*



Semantic  
codes

# WHAT IS PAGE LOAD SPEED?

Page load speed refers to the amount of time it takes for a web page to fully load in a user's web browser. This includes the time it takes to receive and process the HTML, CSS, JavaScript, images, and other resources required to display the web page.



# HOW THE WEB WORKS

When a user enters an URL in the url tab of a browser

**1** **DNS (DOMAIN NAME SYSTEM) LOOKUP:**

**2** **HTTP REQUESTS**

**3** **SERVER RESPONSE:**

**4** **RENDERING**

**5** **COMPLETION**

Everything happens in a micro seconds





Placeholder for a post in the top row of the main content area. It features a loading spinner in the center, indicating that the content is still being fetched.

Placeholder for a post in the bottom row of the main content area. It also features a loading spinner in the center, indicating that the content is still being fetched.

Placeholder for a post in the right-hand sidebar. It includes a blue profile picture, a title, and two lines of text, with a downward arrow indicating it is expandable.

Placeholder for a list of items in the right-hand sidebar. It consists of several horizontal lines of text, each followed by a downward arrow, representing a list of links or items.

Placeholder for a post or section at the bottom of the right-hand sidebar, featuring a title and a few lines of text.

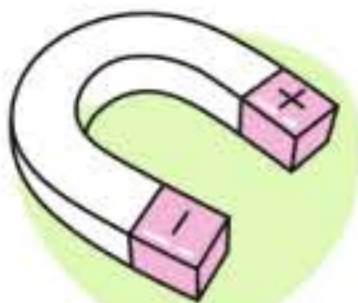
# WHY IT'S NOT LOADING ?



**LARGE FILE SIZES**



**SERVER  
PERFORMANCE**



**BLOATED CODE**



**BROWSER  
COMPATIBILITY**

# LARGE FILE SIZE

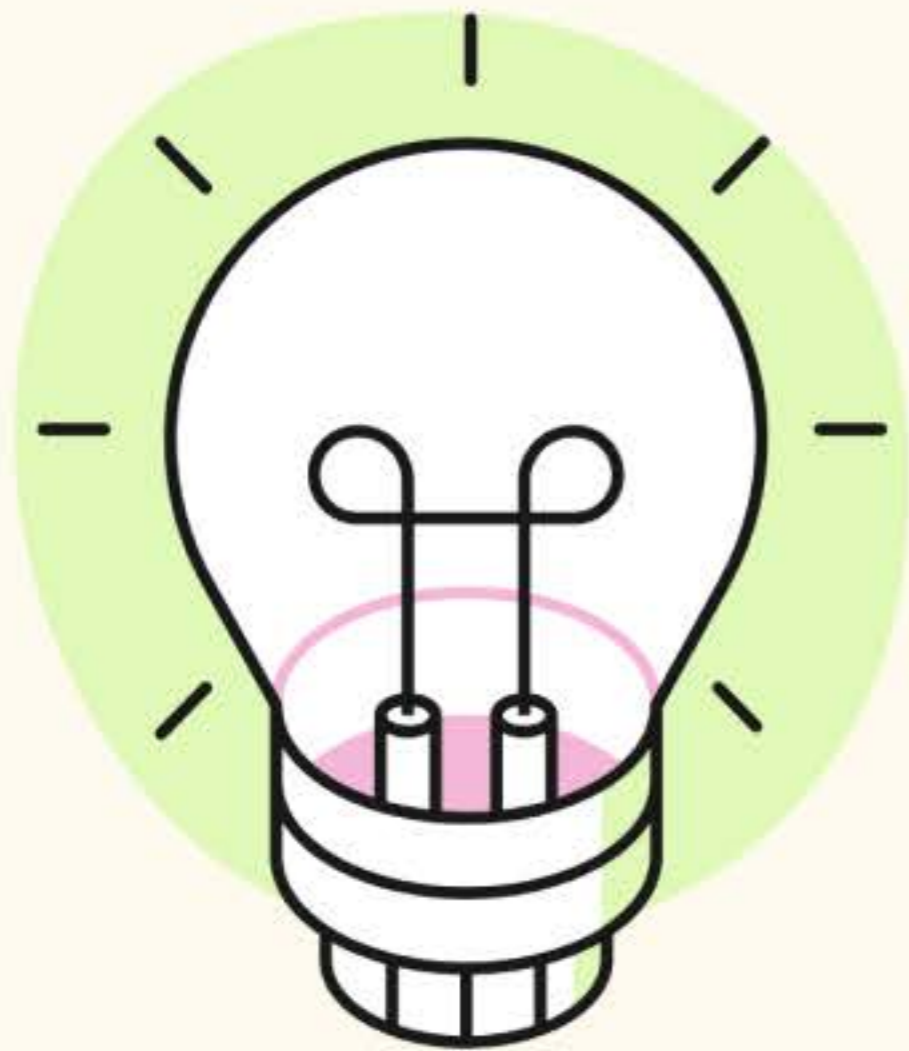
Large file sizes, such as images or videos, can slow down the loading speed of a web page.

The best formats used for websites are

- PNG
- WebP
- GIF

Overall, if you want to optimize your website's loading speed, it's important to optimize your images too.



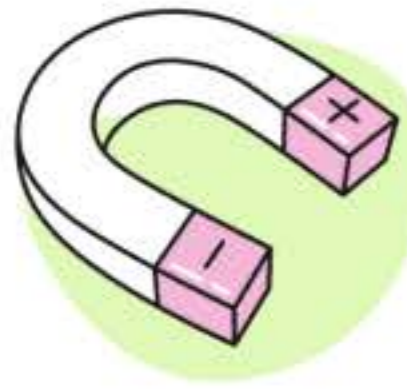


# SERVER PERFORMANCE

Server performance is an important factor that can affect the page load speed of a website. The server is responsible for handling requests from users' web browsers and delivering the website's content to them.

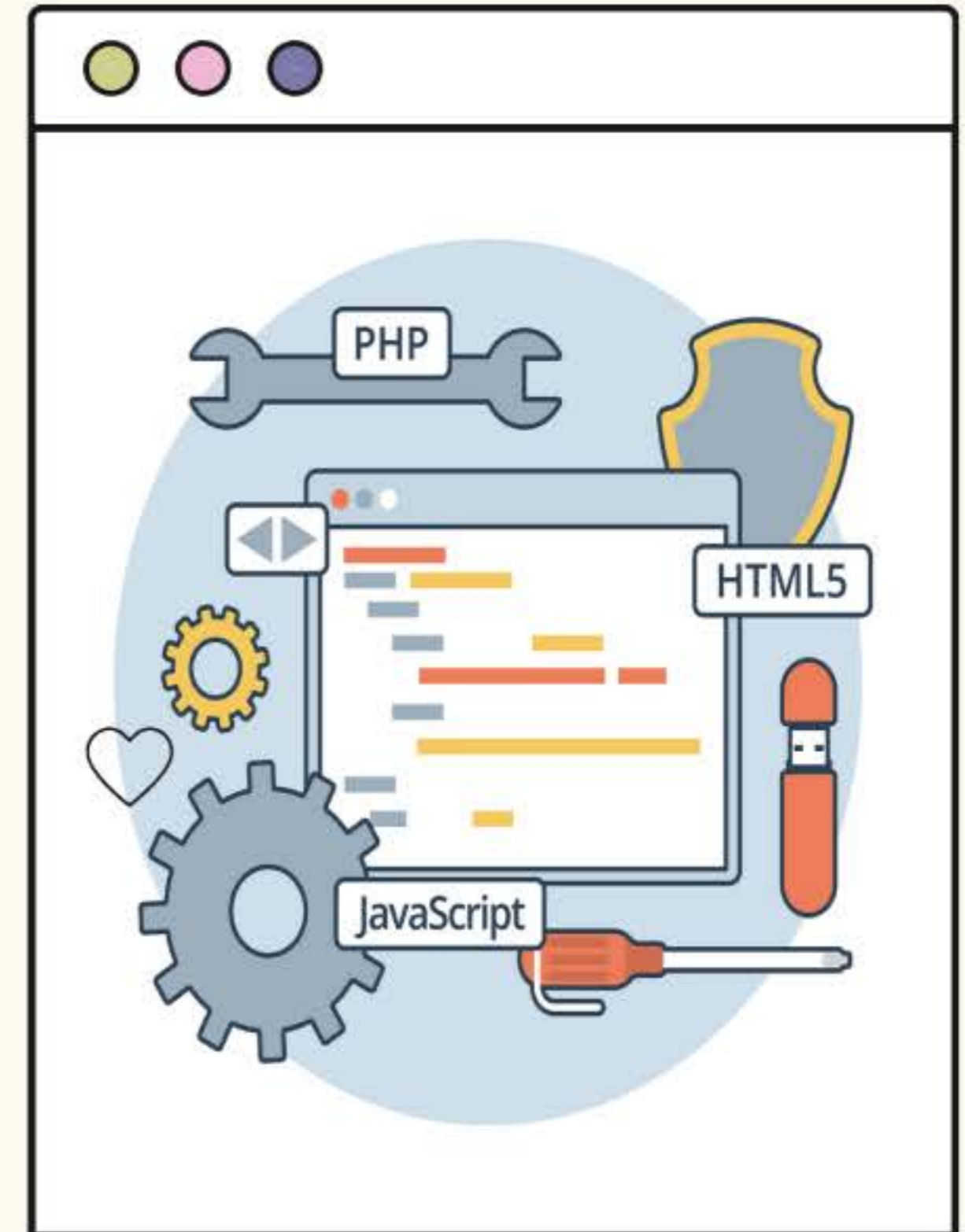
- Server Hardware
- Server Software
- Network Latency
- Server Location
- Server Load

It's important to monitor the server's hardware and software, optimize server settings and configurations, and ensure that the server is properly maintained and updated.

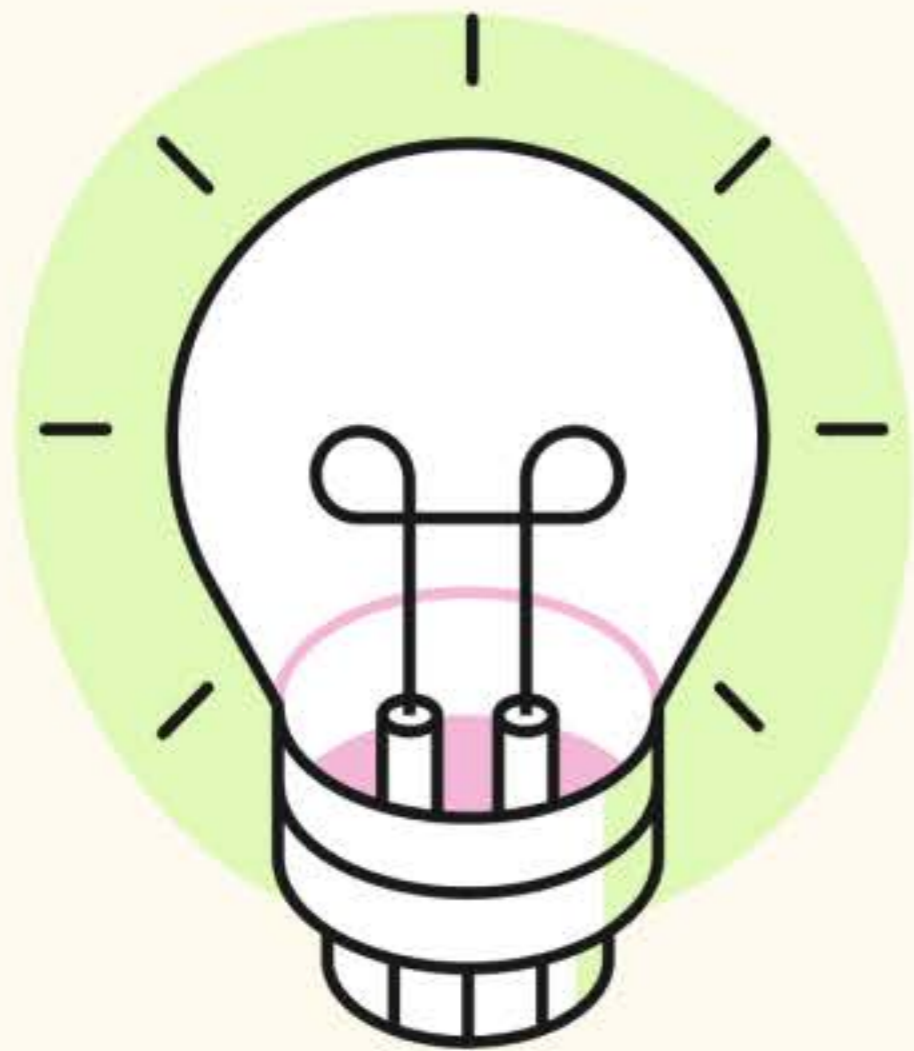


## **BLOATED CODES**

Excessive code, including HTML, CSS, and JavaScript, can also slow down page load time. This can happen if the code is not properly optimized or if there is a lot of redundant code.







# **BROWSER COMPATIBILITY**

The way a web page is coded can affect how well it loads in different browsers. If a web page is not optimized for certain browsers, it may take longer to load in those browsers.



**PAGE LOAD SPEED**

**THANK  
YOU**

So Let's build super  
fast websites.

